

**Ueli Sonderegger GmbH**

dipl. Architekt ETH/SIA

Rosentalstrasse 8

CH-9410 Heiden

Fon +41 71 898 60 00

Fax +41 71 898 60 01

info@sonderegger-arch.ch

www.sonderegger-arch.ch

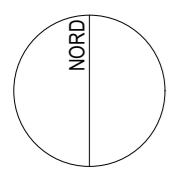
Einwohnergemeinde Wald AR, Dorf 37, 9044 Wald

Umbau Wohn- und Geschäftshaus, Dorf 36, 9044 Wald

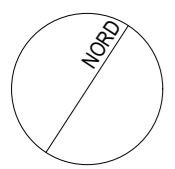
**Vorprojekt**

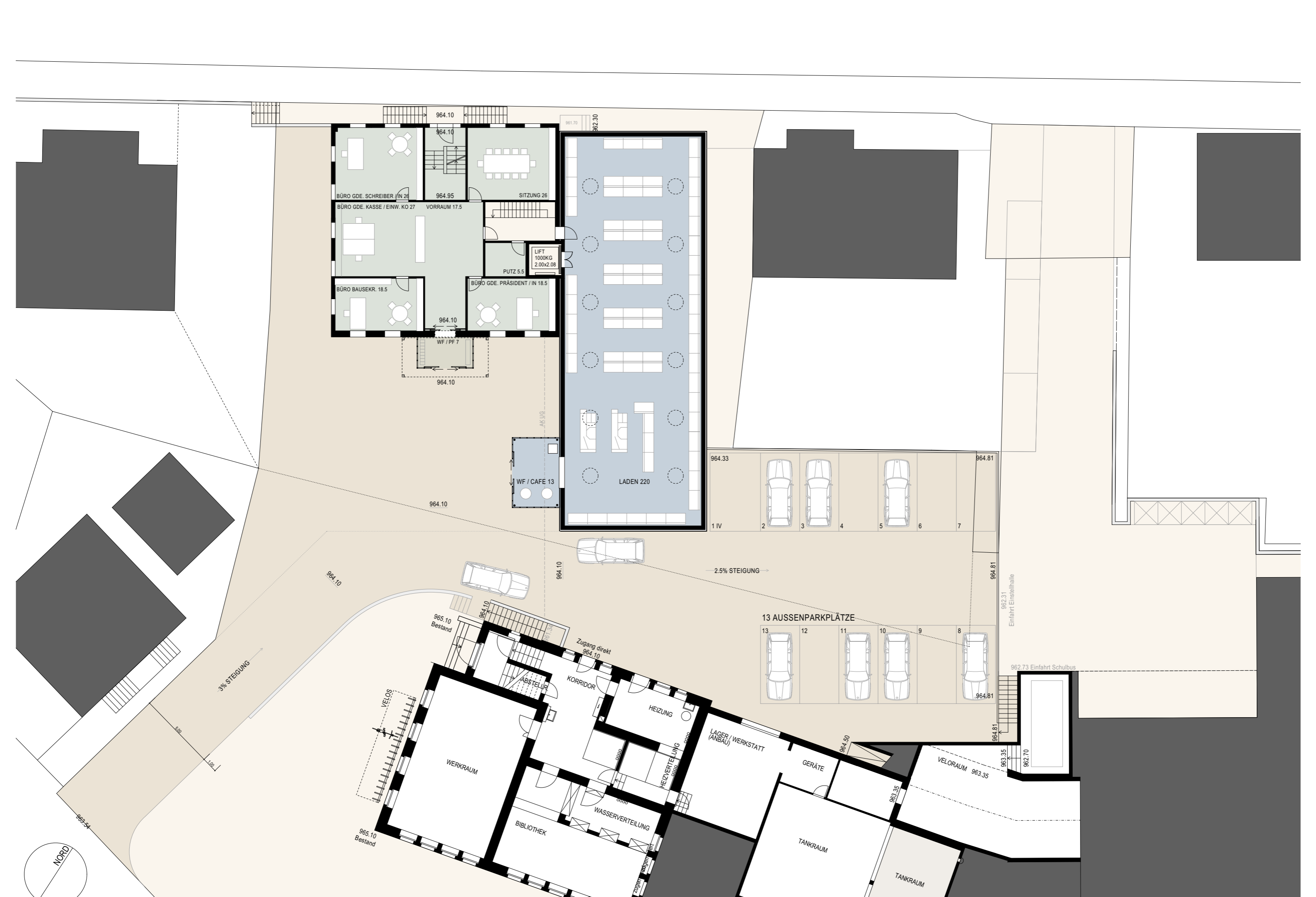
9. November 2018

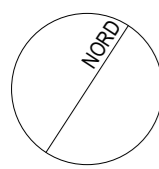


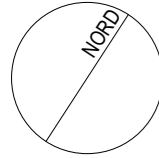


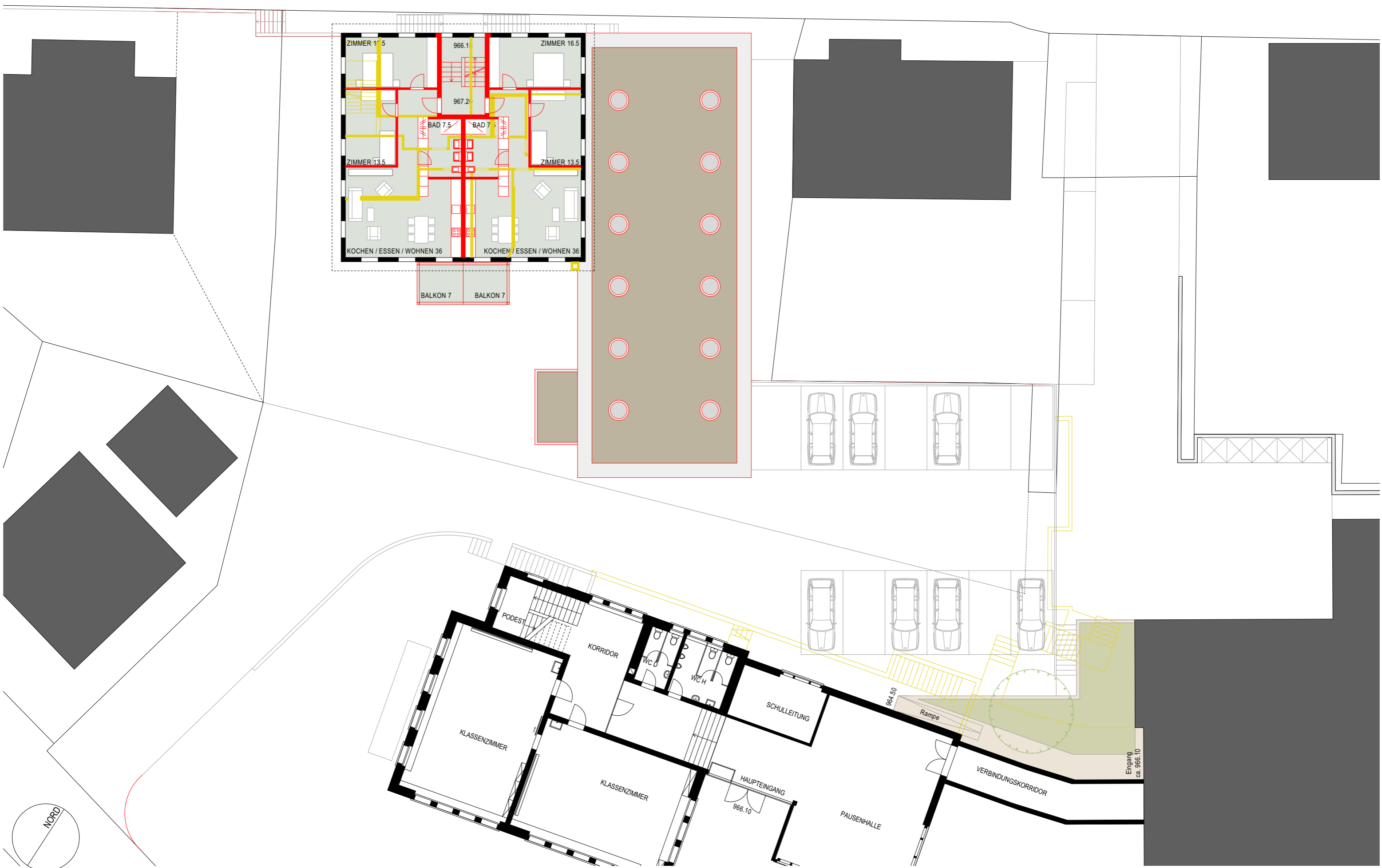








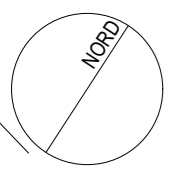


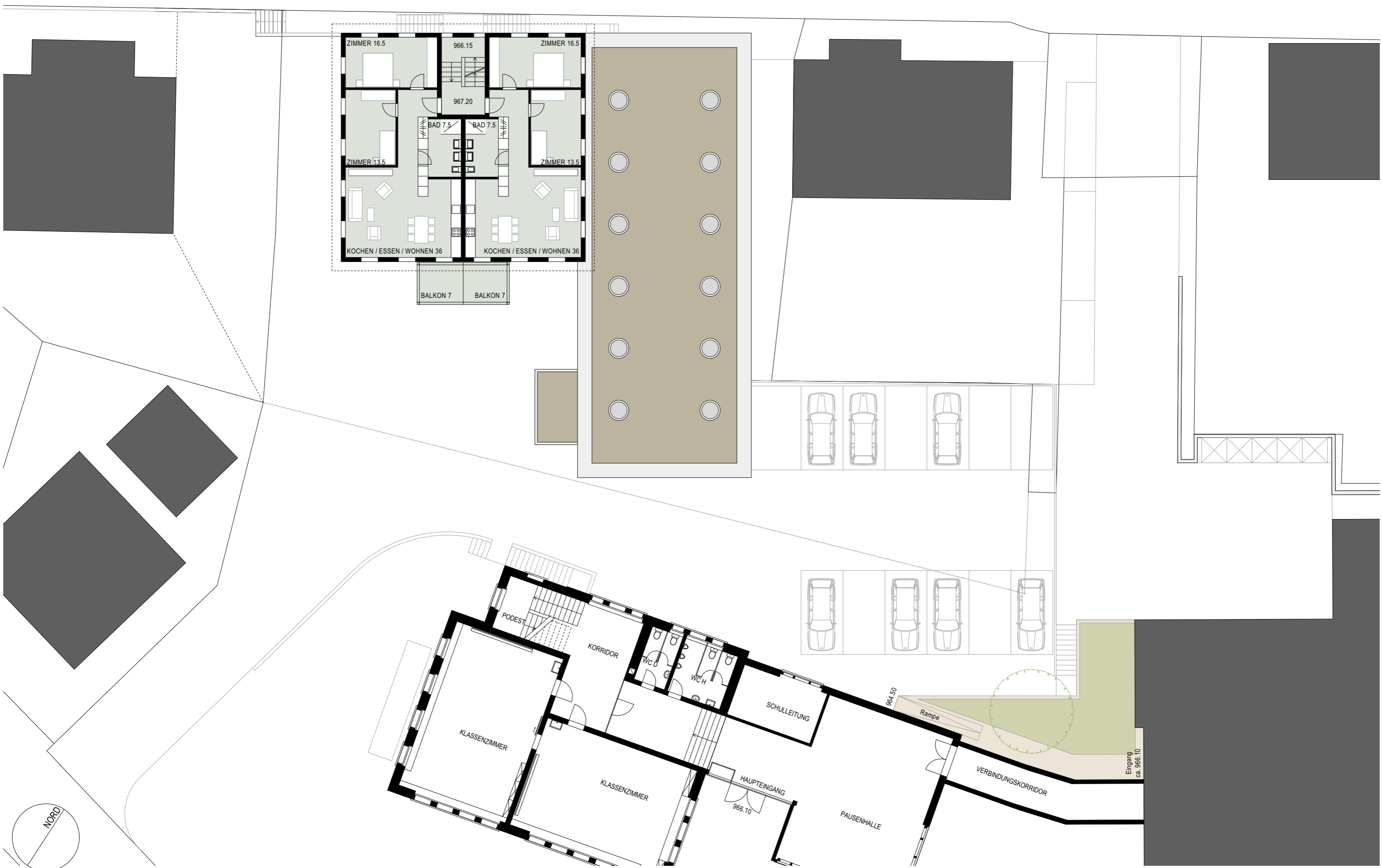


ZIMMER 11.5  
 966.1  
 967.2  
 BAD 7.5  
 BAD 7  
 ZIMMER 16.5  
 ZIMMER 13.5  
 ZIMMER 13.5  
 KOCHEN / ESSEN / WOHNEN 36  
 KOCHEN / ESSEN / WOHNEN 36  
 BALKON 7  
 BALKON 7

BALKON 7  
 BALKON 7

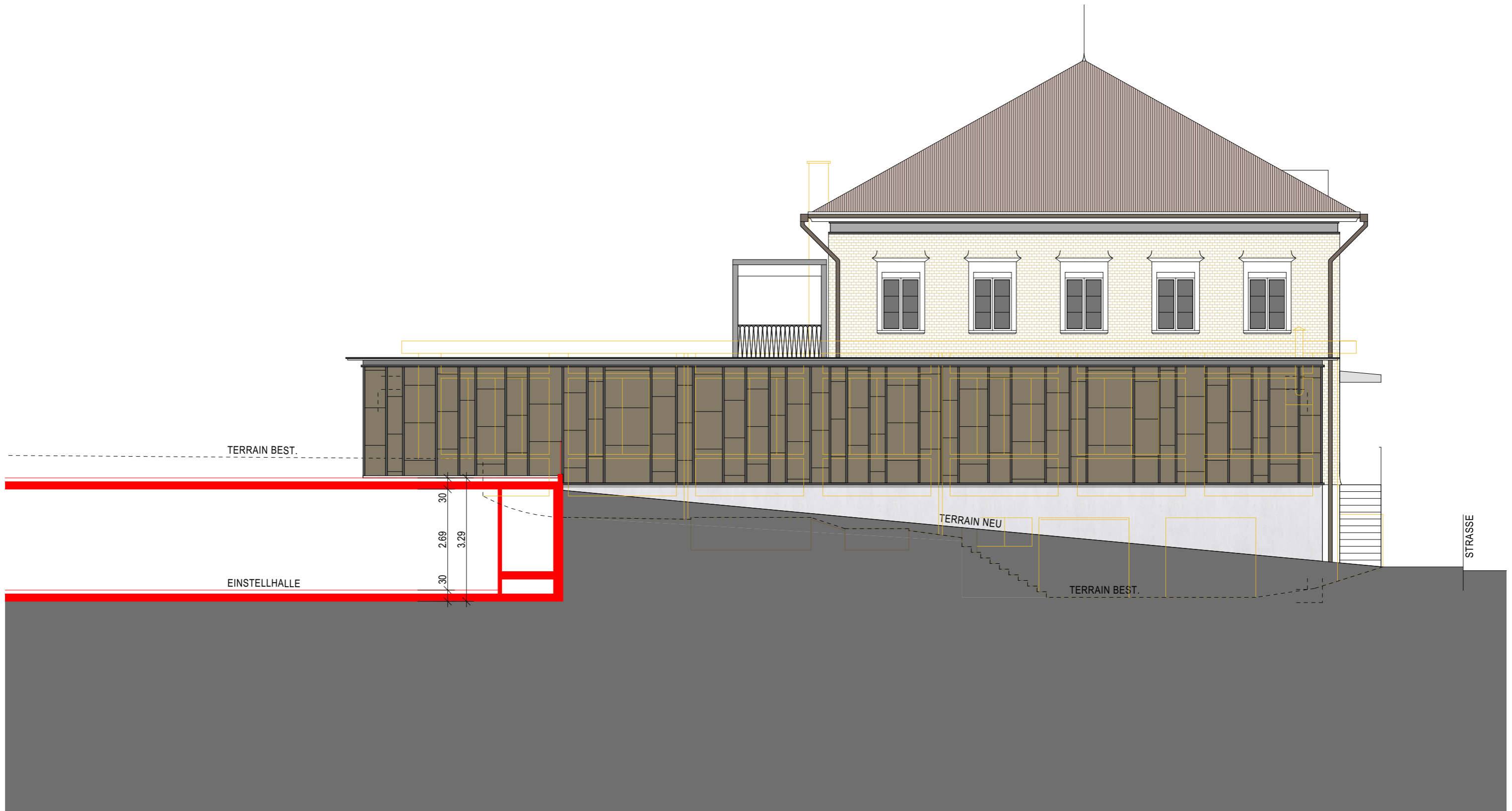
PODEST  
 KORRIDOR  
 WC D  
 WC H  
 SCHULEITUNG  
 964.50  
 Rampe  
 KLASSEZIMMER  
 KLASSEZIMMER  
 HAUPTINGANG  
 966.10  
 PAUSENHALLE  
 VERBINDUNGSKORRIDOR  
 Eingang ca. 966.10











TERRAIN BEST.

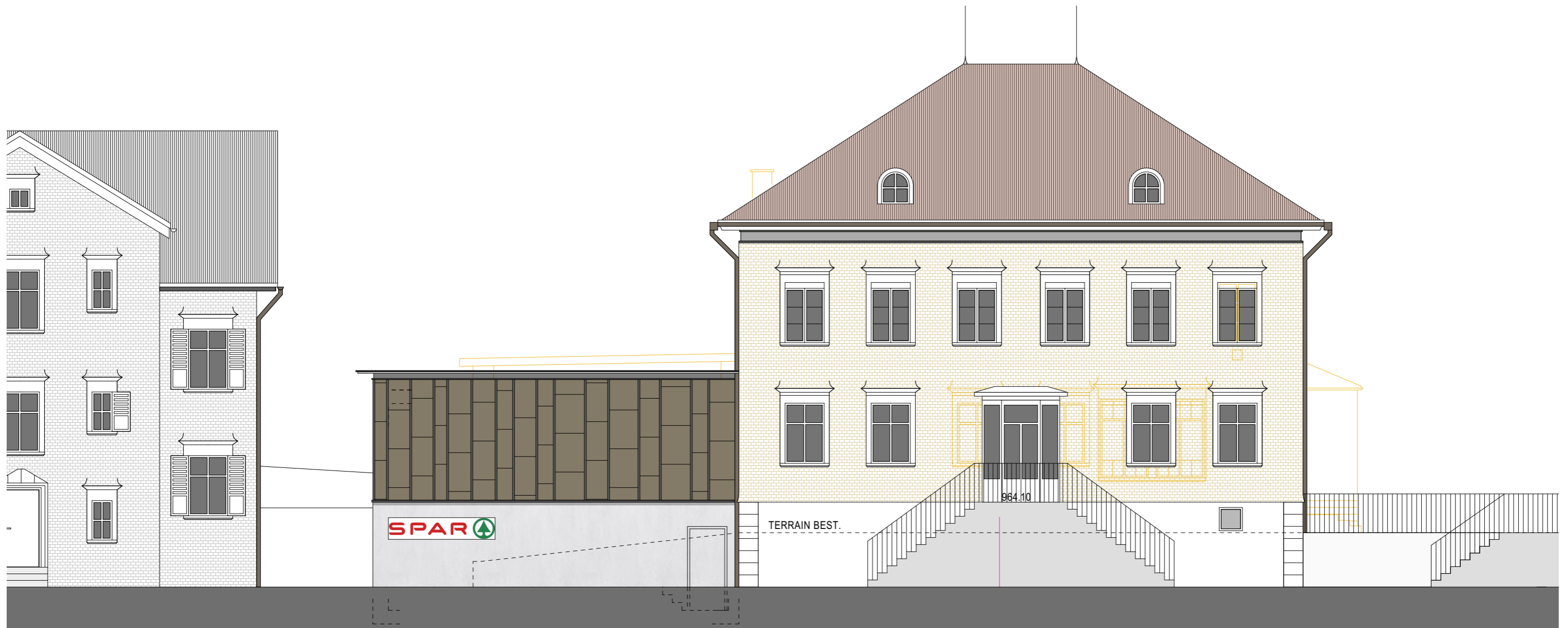
EINSTELLHALLE

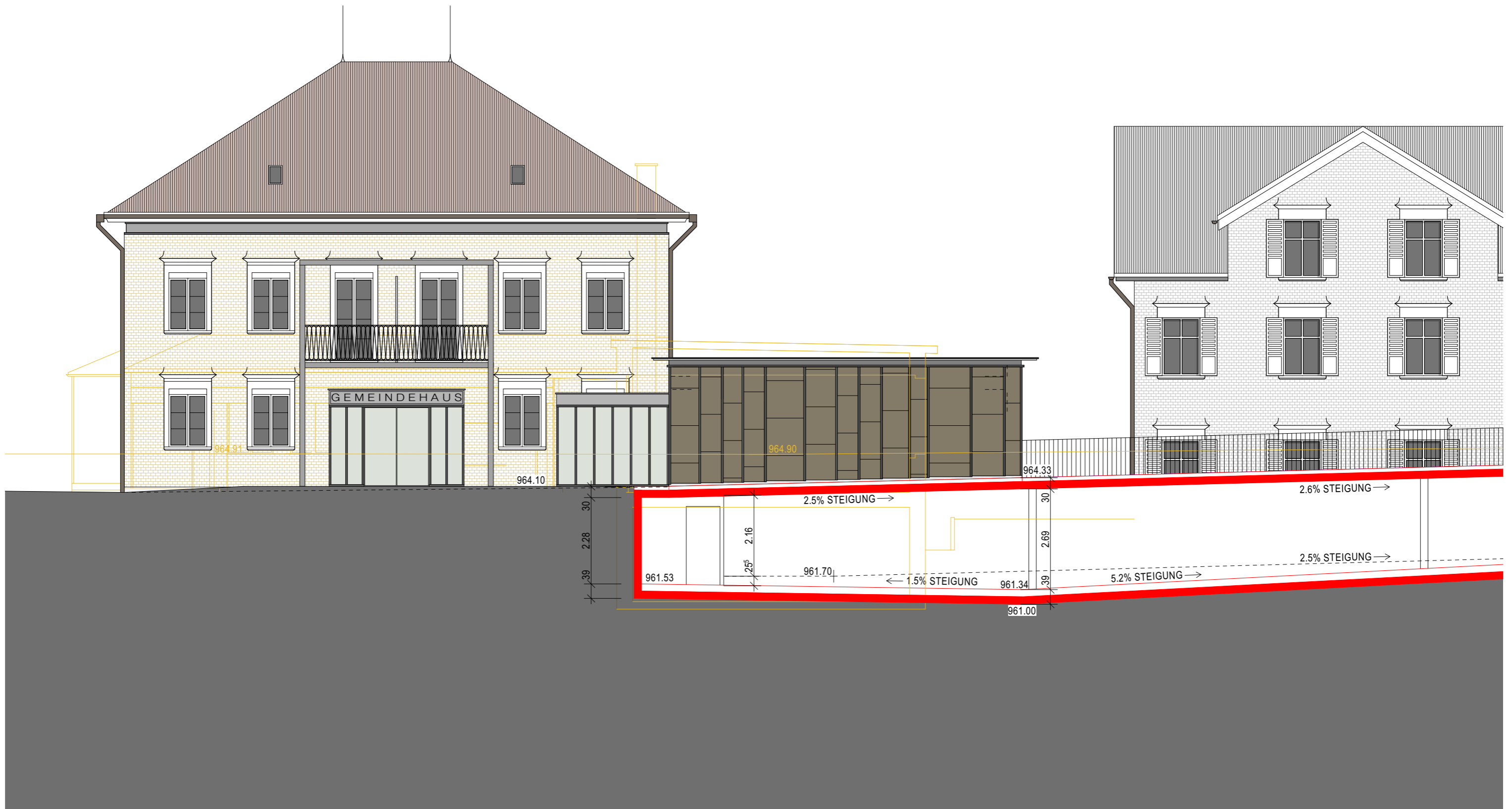
30  
2.69  
3.29  
30

TERRAIN NEU

TERRAIN BEST.

STRASSE









STRASSE

TERRAIN BEST.

964.10

TERRAIN NEU

965.10

1909

SPAR